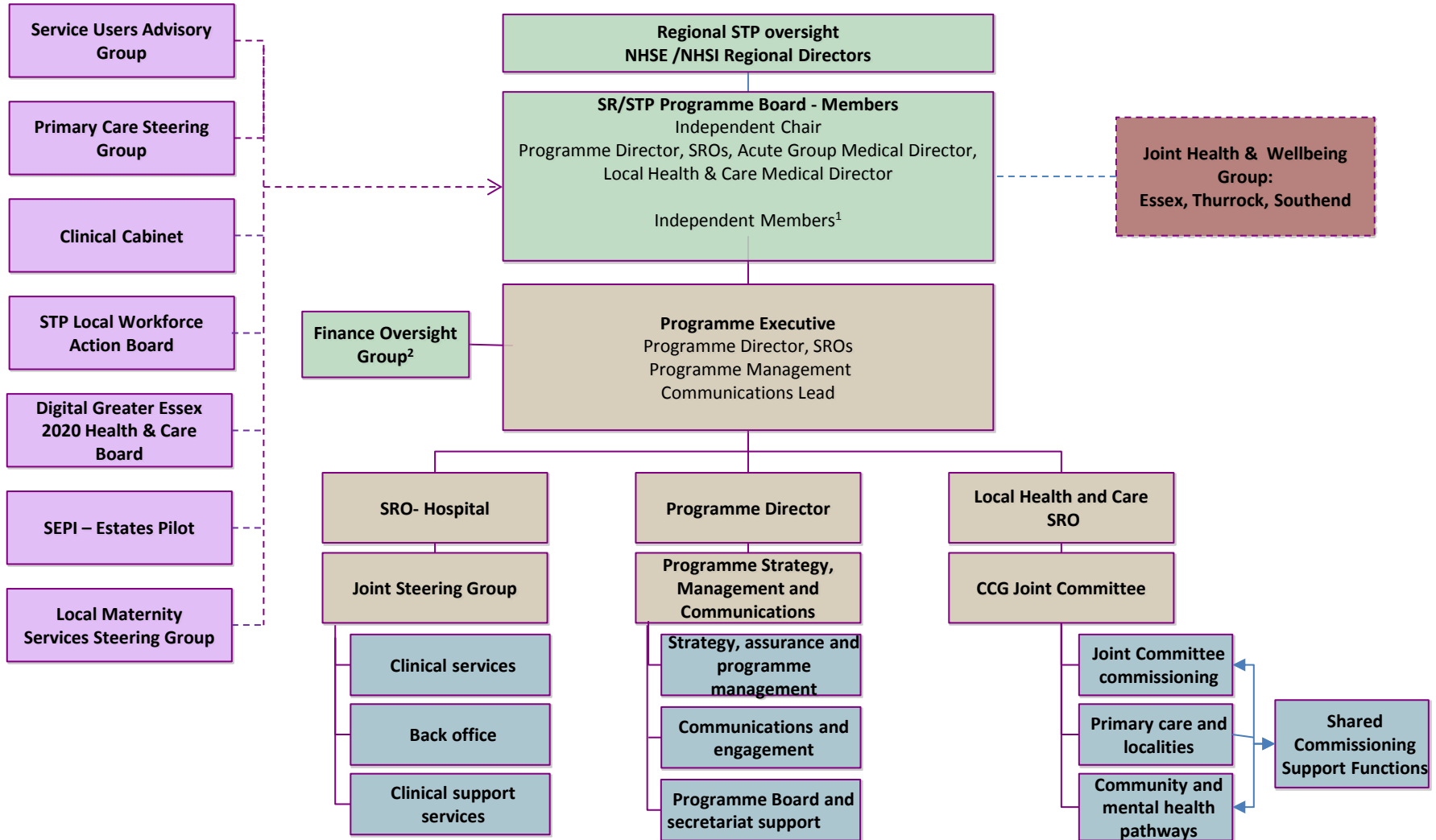
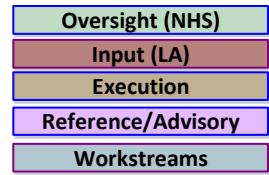


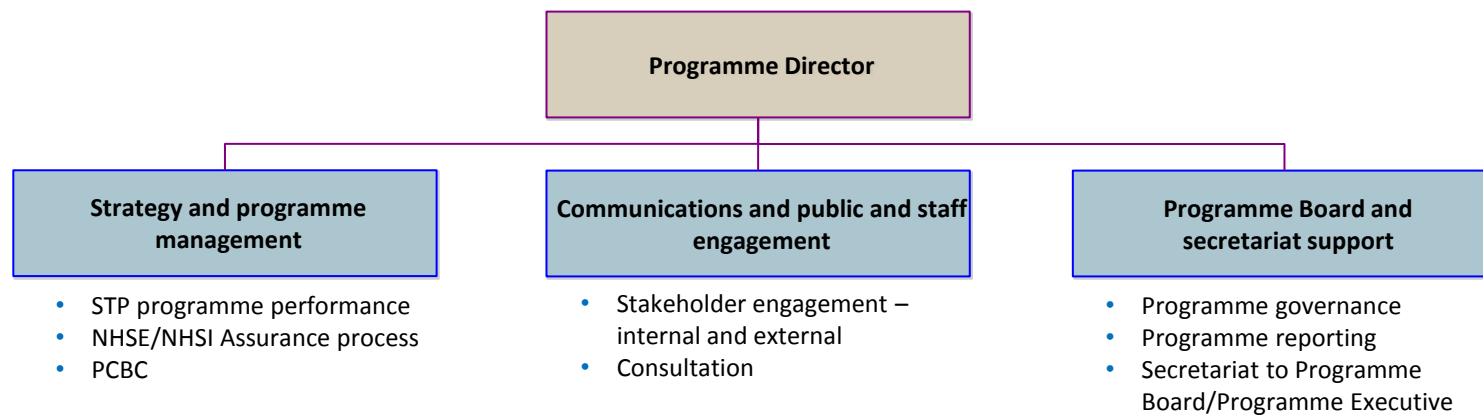
Mid & South Essex STP Governance



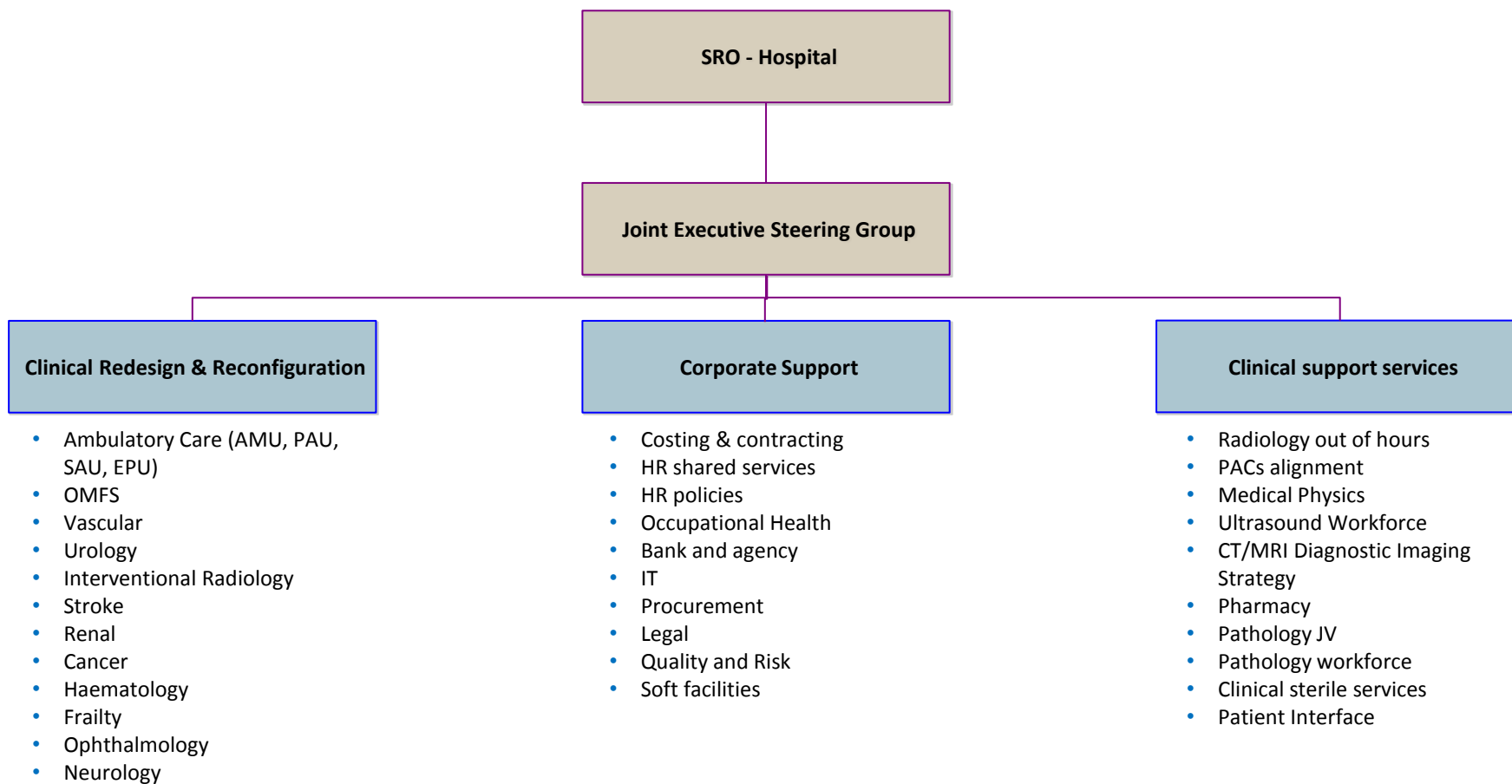
(1) Role to bring externality to the Board; CEOs of Local Authorities, Chair of Service User Advisory Group, Representative for Healthwatch, Vice Chancellor of Anglia Ruskin University

(2) 'Reports' also to NHSE/NHSI

Programme coordination



In Hospital: programme of work



Local Health & Care: programme of work

